



# FITZGERALD

HOUSE NUMBERS: 10 & 14

Four bedroom detached house with a double garage



**GROUND FLOOR**

Kitchen / Dining

26'2" (8m) max x 11'8" (3.6m) max

Dining Room

11'8" (3.6m) max x 14'7" (4.5m) max

Study/Media Room

9'5" (2.9m) max x 10'4" (3.2m) max

Living Room

16'4" (5m) max x 19'3" (5.9m) max

Garage

19'6" (6m) max x 22'3" (6.8m) max

Master bedroom

16'7" (5.1m) max x 16'5" (5.2m) max

Bedroom 2

15'4" (4.7m) max x 13'4" (4.1m) max

Bedroom 3

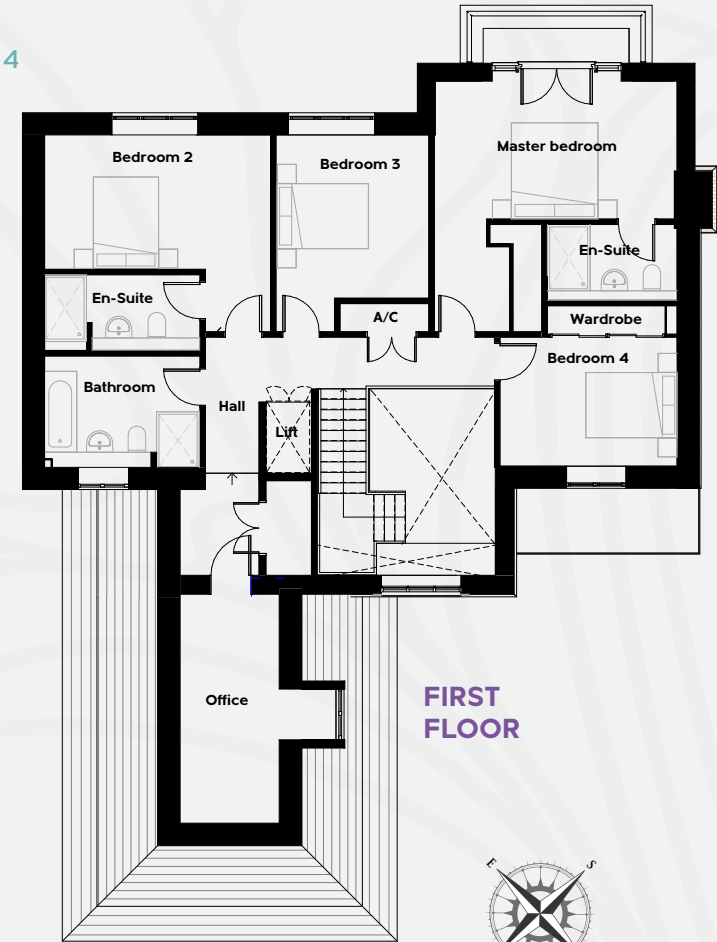
10'4" (3.2m) max x 11'1" (3.4m) max

Bedroom 4

12'1" (3.7m) max x 8'9" (2.7m) max

Office

15'7" (4.8m) max x 6'6" (2m) max



**FIRST FLOOR**



TOTAL GROUND FLOOR 1,808ft<sup>2</sup> (168m<sup>2</sup>) TOTAL FIRST FLOOR 1,216 ft<sup>2</sup> (113m<sup>2</sup>)



[www.mulberryhomesltd.co.uk](http://www.mulberryhomesltd.co.uk)

