



GATSBY

HOUSE NUMBER: 16

Five/six bedroom detached house with a double garage

Kitchen / Dining

18'7" (5.7m) max x 26'9" (8.2m) max

Dining Room

15'4" (4.7m) max x 11' (3.36m) max

Living Room

16'8" (5.13m) max x 24.2' (7.4m) max

Study

12'7" (3.9m) max x 10' (3.1m) max

Master Bedroom

16'7" (5.1m) max x 16' (4.9m) max

Bedroom 2

13'7" (4.2m) max x 13'1" (4m) max

Bedroom 3

13'1" (4m) max x 11'8" (3.6m) max

Bedroom 4

16'3" (4.96m) max x 10'2" (3.1m) max

Bedroom 5

12'7" (3.9m) max x 11'8" (3.6m) max

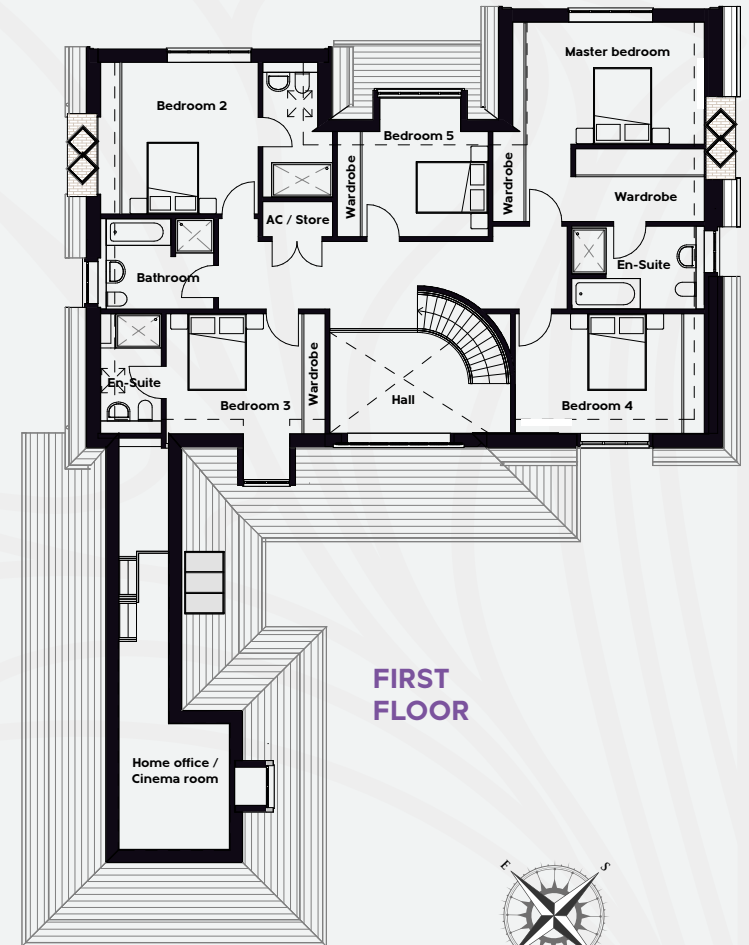
Home Office / Cinema Room

14'1" (4.3m) max x 27'8" (8.5m) max

TOTAL GROUND FLOOR 2,529 ft² (235m²) TOTAL FIRST FLOOR 1,582 ft² (147m²)
TOTAL OVER GARAGE 247 ft² (23m²)



GROUND FLOOR



FIRST FLOOR

