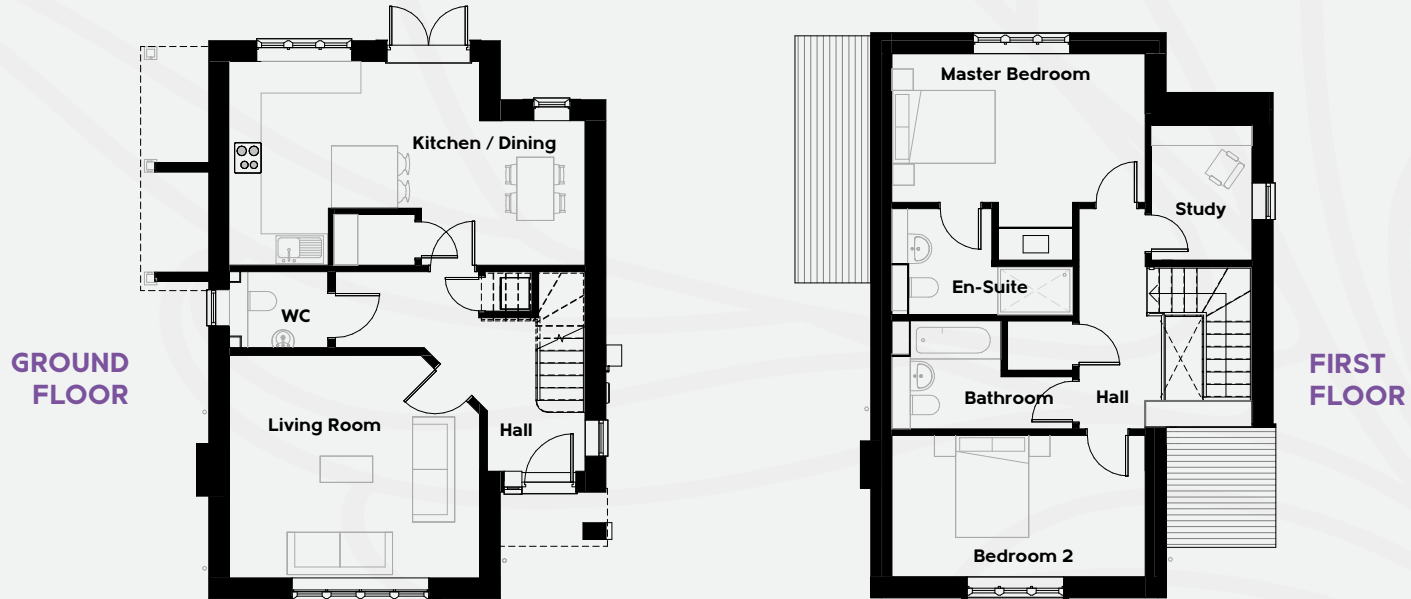




# GEORGE

HOUSE NUMBER : 1

Two bedroom plus study with garage



Kitchen/Dining Room  
23'7" (7.2m) max x 18'6" (5.6m) max

Living Room  
18'5" (5.6m) x 16'11" (5.1m)

Master Bedroom  
18'5" (5.5m) x 10'7" (3.2m)

En-Suite  
18'5" (5.5m) x 16'11" (5.15m) max

Bedroom 2  
18'5" (5.5m) x 16'11" (5.15m) max

Bathroom  
10'6" (3.2m) x 10'2" (3m)

Study  
10'2" (3m) x 7'6" (2.3m)



**TOTAL GROUND FLOOR 646 ft<sup>2</sup> 60m<sup>2</sup> TOTAL FIRST FLOOR 619 ft<sup>2</sup> (58 m<sup>2</sup>)**



[www.mulberryhomesltd.co.uk](http://www.mulberryhomesltd.co.uk)

