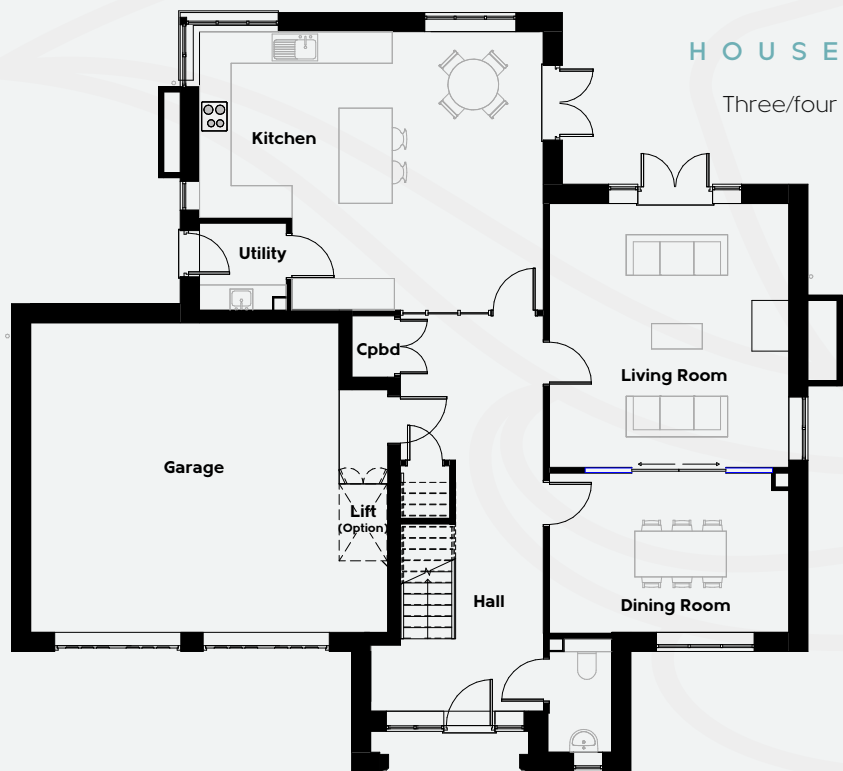




# LUTYENS

HOUSE NUMBERS: 6, 12 & 15

Three/four bedroom detached house with a double garage



**GROUND FLOOR**



**FIRST FLOOR**

Kitchen / Diner  
22'3" (6.8m) max x 17'7" (5.4m) max

Living Room  
15'4" (4.7m) max x 17' (5.2m) max

Dining Room  
15'4" (4.7m) max x 10'2" (3.1m) max

Double Garage  
22'9" (7m) max x 19'6" (6m) max

Master Bedroom  
16'4" (5m) max x 21'3" (6.5m) max

Bedroom 2  
13'7" (4.2m) max x 14'7" (4.5m) max

Bedroom 3  
16'4" (3.7m) max x 17' (5m) max

**TOTAL GROUND FLOOR 1611 ft<sup>2</sup> (150m<sup>2</sup>) TOTAL FIRST FLOOR 1273 ft<sup>2</sup> (118m<sup>2</sup>)**



[www.mulberryhomesltd.co.uk](http://www.mulberryhomesltd.co.uk)

