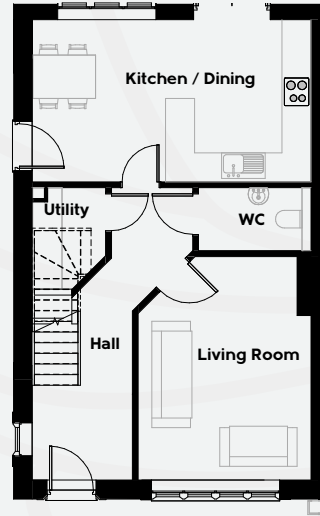




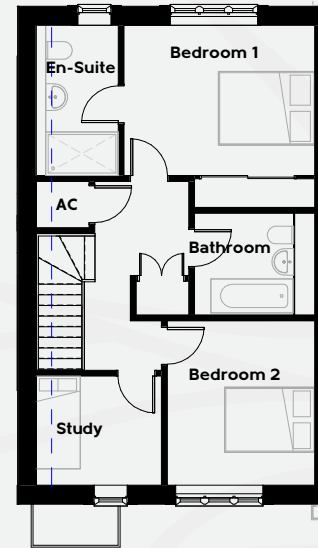
LYTTON

HOUSE NUMBER : 9

Two/three bedroom semi detached house with garage



GROUND FLOOR



FIRST FLOOR

Kitchen/Dining

19' (5.8m) max x 10'8" (3.3m) max

Living Room

11'7" (3.57m) max x 15'2" (4.63m) max

Master Bedroom

13' (3.95m) max x 10'4" (3.2m) max

Bedroom 2

10'2" (3.1m) max x 11'2" (3.4m) max

Study / Bedroom 3

8'5" (2.6m) max x 7'5" (2.27m) max

TOTAL GROUND FLOOR + GARAGE 797 ft² (74m²) TOTAL FIRST FLOOR 591 ft² (55m²)



www.mulberryhomesltd.co.uk

